

Adopted by:

Watauga County
Date: June 20, 2017

Town of Boone
Date: June 15, 2017

Town of Blowing Rock
Date: March 12, 2013

Town of Seven Devils
Date: April 9, 2013

Town of Beech Mountain
Date: April 9, 2013

NCDOT
Date: September 7, 2017

Endorsed by:

High Country RPO
Date: August 16, 2017

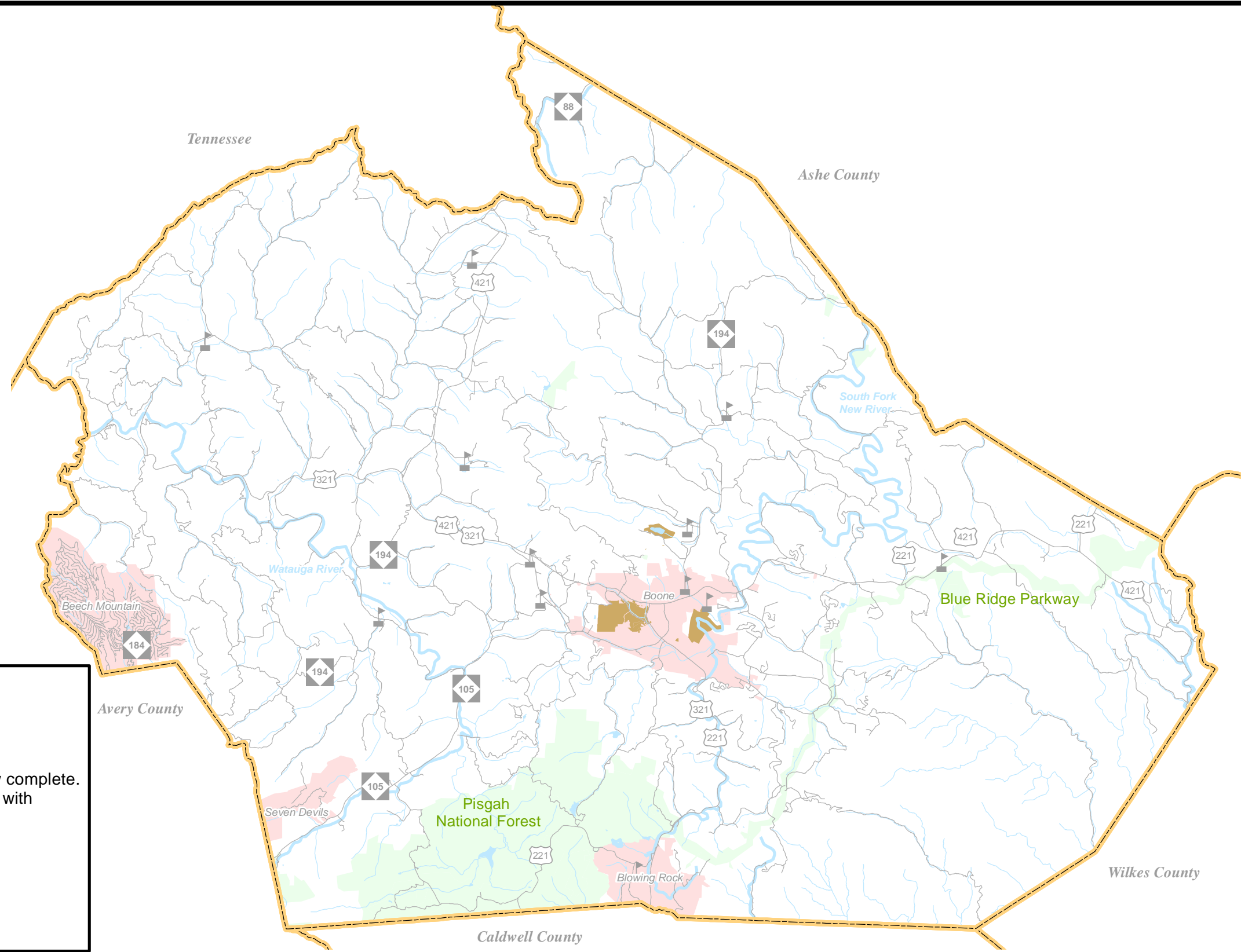
Recommended by:

Transportation Planning Branch
Date: August 17, 2017

Notes:

1. NC 105/Bodenheimer Drive Connector location changed to reflect preferred alternative.
2. US 421 improvements to a boulevard between US 321 and NC 194 was under construction at time of 2013 CTP but is now complete.
3. Bicycle and Pedestrian additions to bring CTP into alignment with the Town of Boone Pedestrian and Bicycle Plan adopted April 24, 2014.

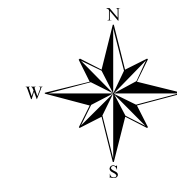
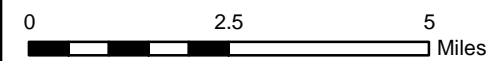
Watauga County original CTP adoption: April 16, 2013
 Boone original CTP adoption: June 18, 2013
 High Country RPO original endorsement: August 21, 2013
 NCDOT original adoption: September 5, 2013



- Sheet 1 Adoption Sheet
- Sheet 2 Highway Map
- Sheet 3 Public Transportation and Rail Map
- Sheet 4 Bicycle Map
- Sheet 5 Pedestrian Map

Legend

- Roads
- Rivers and Streams
- 🏫 Schools
- ▭ County Boundary
- ▭ Municipal Boundary
- ▭ Conservation Land
- ▭ Appalachian State University



Sheet 1 of 5
 Base map date: October 4, 2010
 Refer to CTP document for more details

**Adoption Sheet
 Watauga County**

**Comprehensive
 Transportation Plan**

Plan Date: August 2, 2012
 Revision Date: May 25, 2017